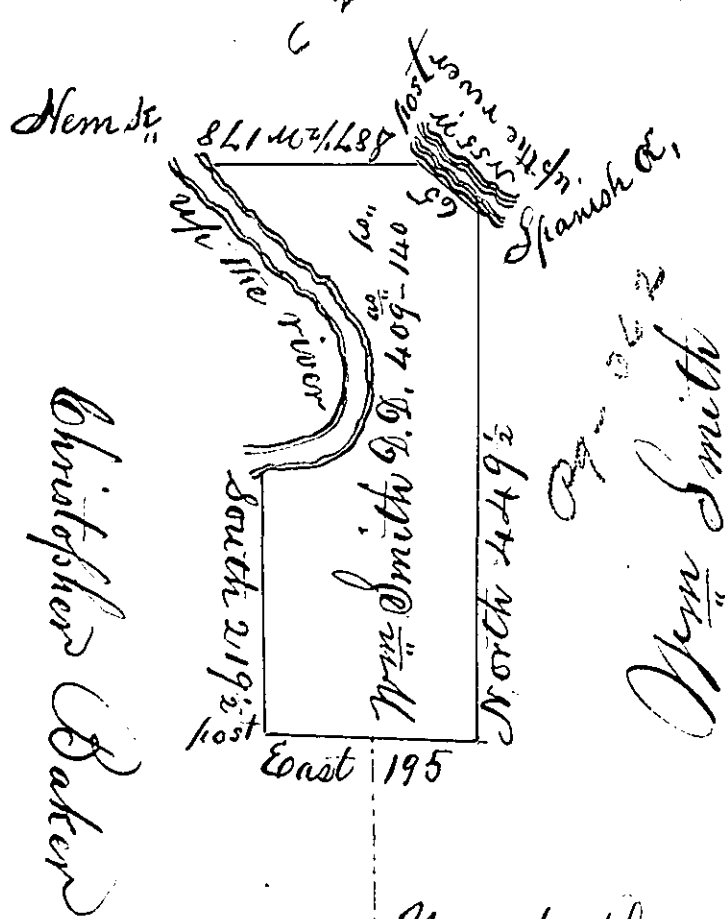


Wm M. Smith courses & distances down the River are as follow



- N 49 E 27
- East 16
- N 61 E 43
- N 34 E 36
- N 20 E 29
- N 5 W 22
- N 13 W 28
- N 39 W 22
- N 43 W 44
- N 58 W 58
- N 50 W 40
- N 33 W 26

Wm M. Smith

Situate on the South side of the West Branch of Susquehanna River and about one mile west of the mouth of big Moshannon Creek Huntingdon County containing 409<sup>ac</sup> 140<sup>1/2</sup> and the usual allowance for roads. Surveyed the 8<sup>th</sup> day of September 1794 for William Smith D.D. in pursuance of a warrant dated the 5<sup>th</sup> day of February 1794.

Daniel Brodhead Esq<sup>r</sup> S. G.

John Canan D. S.

IN TESTIMONY that the above is a copy of the original remaining on file in the Department of Internal Affairs of Pennsylvania, made conformably to an Act of Assembly approved the 16th day of February, 1833, I have hereunto set my Hand and caused the Seal of said Department to be affixed at Harrisburg, this

Twenty first day of July 1834.

J. Simpson Africa,  
Secretary of Internal Affairs